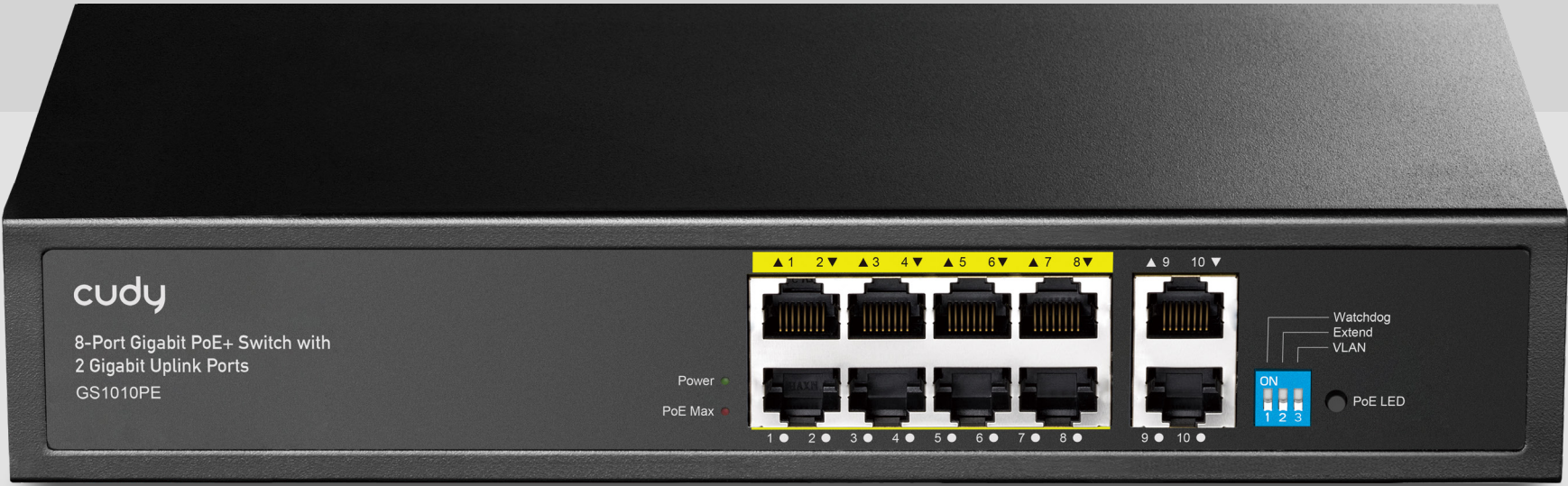




Model: GS1010PE

8-Port Gigabit PoE+ Switch with 2 Gigabit Uplink Port



8

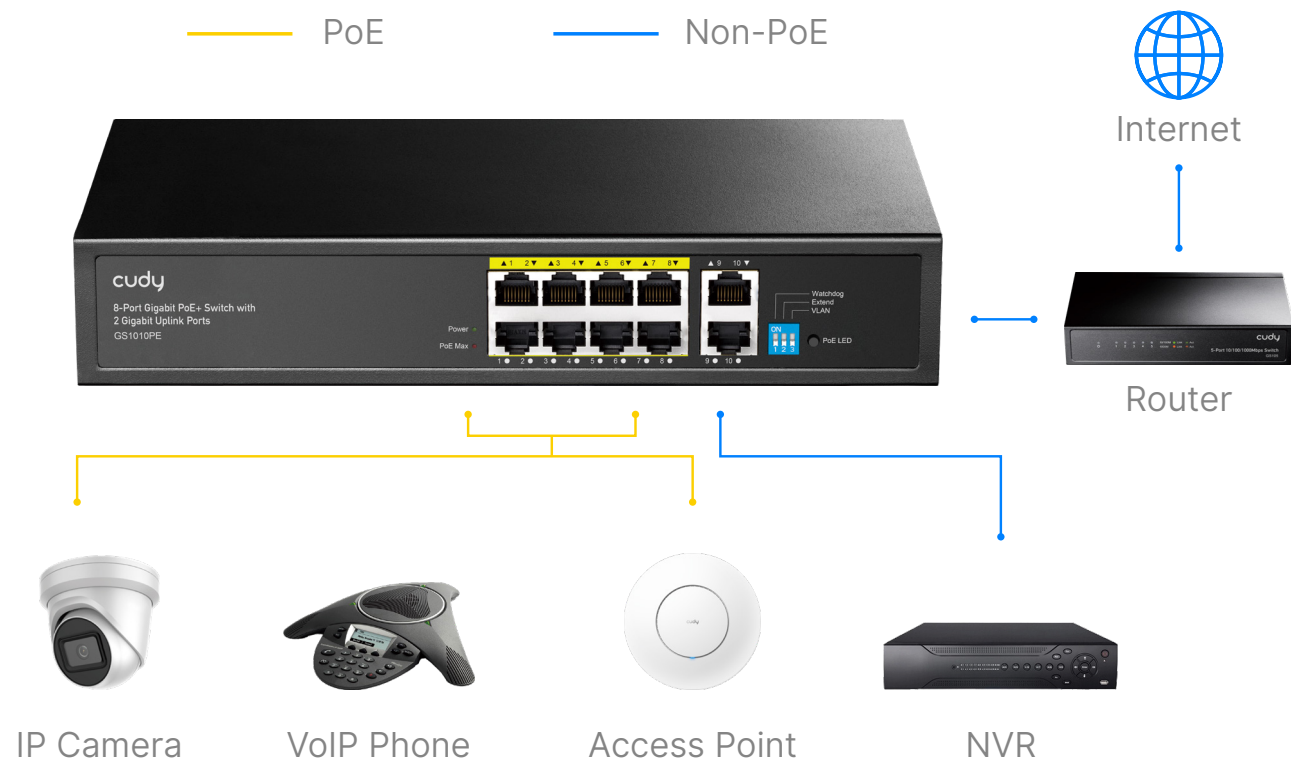
PoE+ Ports

120W

Power Supply

Watchdog

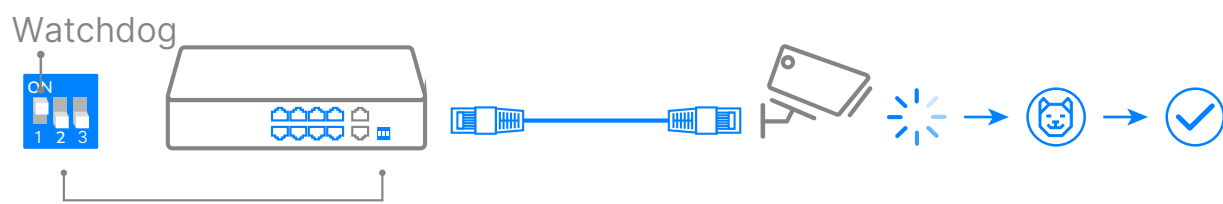
[Datasheet](#)



Cudy PoE switches connect and power various network devices seamlessly and efficiently. PoE Switches simplify network infrastructure by combining power and data into a single cable, eliminating additional power outlets and wiring.

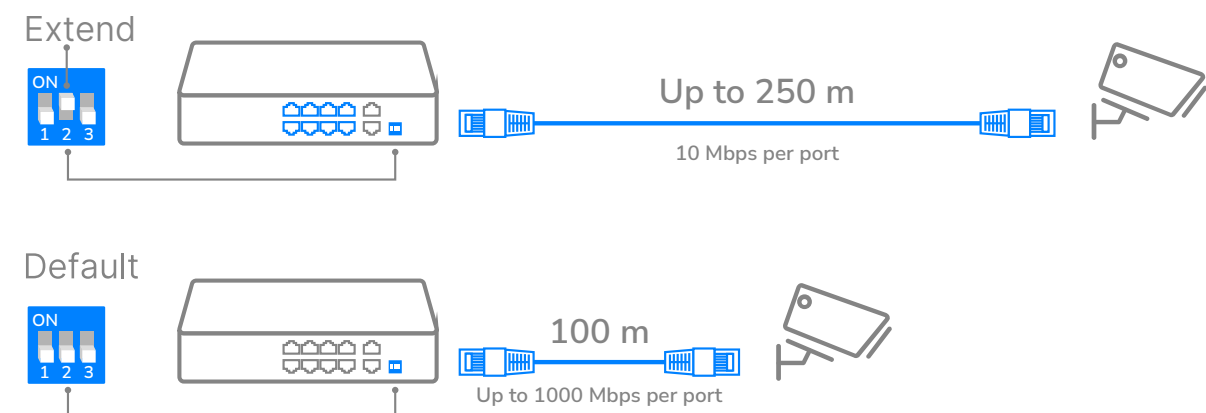
Watchdog for Improved Reliability

The PoE Watchdog monitors link activity on port 1~8 and attempts to reboot connected clients that have been inactive for 5 minutes, ensuring system stability. Do not turn it on for clients with online auto-upgrade feature.



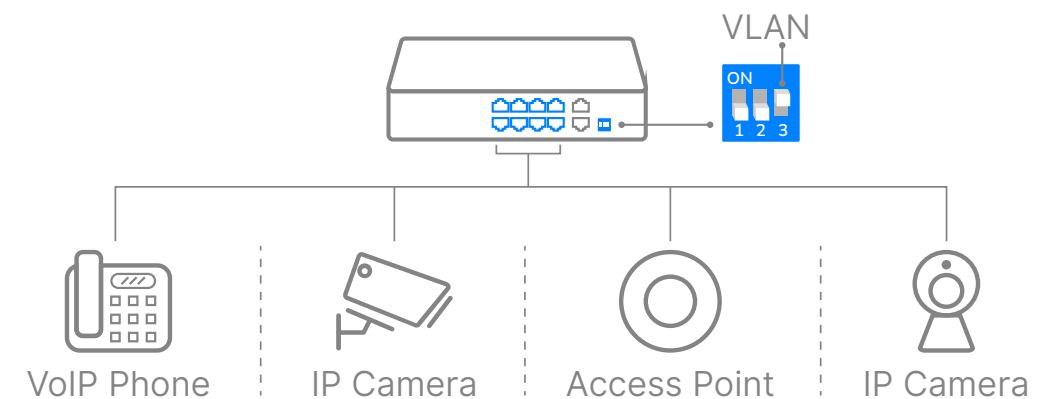
Extend for Long-Range Powering

Prolongs the PoE transmission distance of port 1~8 to a maximum of 250 m, enabling long-range surveillance installations.



VLAN Mode for Port Isolation

Separates clients into different subnets for improved security, preventing data leakage in case of client-side hacking.





Highlights

- 8× GbE with 802.3at/af PoE up to 30W each port
- 2× Uplink GbE
- Internal 120W Power Supply
- Default/VLAN/Extend Modes
- PoE Watchdog
- PoE Max, PoE per Port LED
- Intelligent power management to prevent power overload
- Fanless Cooling System
- Desktop, Rack-Mountable with mounting kits
- 256×170×44 mm (10.08×6.69×1.73")

Specifications

Protocols	802.3 Protocols	802.3i 10 Mbps over Twisted Pair
		802.3u 100 Mbps over Twisted Pair
		802.3ab 1 Gbps over Twisted Pair
		802.3af PoE
		802.3at PoE
Advanced	PoE Watchdog	
	Muliple working modes, Intelligent power management	

Interfaces	Physical Buttons	Extend On/Off
		VLAN On/Off
		Watchdog On/Off
		PoE LED Button
	PoE+ Ethernet Ports	8× GbE
	Uplink Ethernet Ports	2× GbE
	Extend Mode Ports	#1~#8
	VLAN Mode Ports	#1~#8
	LED	Power
		PoE Status of Each PoE Port
		Link/ACT of Each Ethernet Port
		PoE Max Status
	Power Input	100-240V AC, 50/60 Hz
	Performance	Copper Speed and Distance
Cat. 5 or higher cable: 100 meters at 100 Mbps		
Cat. 5e or higher cable: 100 meters at Gigabit		
Cat. 5e or higher cable: 250 meters at 10 Mbps		
Copper Speed and Distance Note		250-meter transmission is only available on the Extend Mode ports.
Max Forwarding Rate		14.88 Mpps
Max Switching Capacity		20 Gbps
MAC Address Table		2048
Jumbo Frame		16KB
Packet Buffer	1 Mbits	



Specifications

Power	Power Methods	AC
	AC	100-240V 50/60Hz
	Idle Power Consumption (W)	10
	Max Power Consumption (W)	120
Reliability	Lightning/Surge Protection	GbE: DM 2kV, CM 4kV
	ESD Air Protection	8kV
	ESD Contact Protection	6kV
	Grounding Methods	Three-Prong Plug
	Environment	Operating Temperature: -10~50 °C (14~122 °F)
		Storage Temperature: -40~70 °C (-40~158 °F)
		Operating Humidity: 10%~90% non-condensing
		Storage Humidity: 5%~95% non-condensing
Mechanical	Installation	Desktop
		Rackmount via Brackets (Bracket not included)
	Casing Material	Metal
	Dimension	256×170×44 mm
		10.08×6.69×1.73 inches

Package Content

- GS1010PE
- Power Cord
- Installation Guide