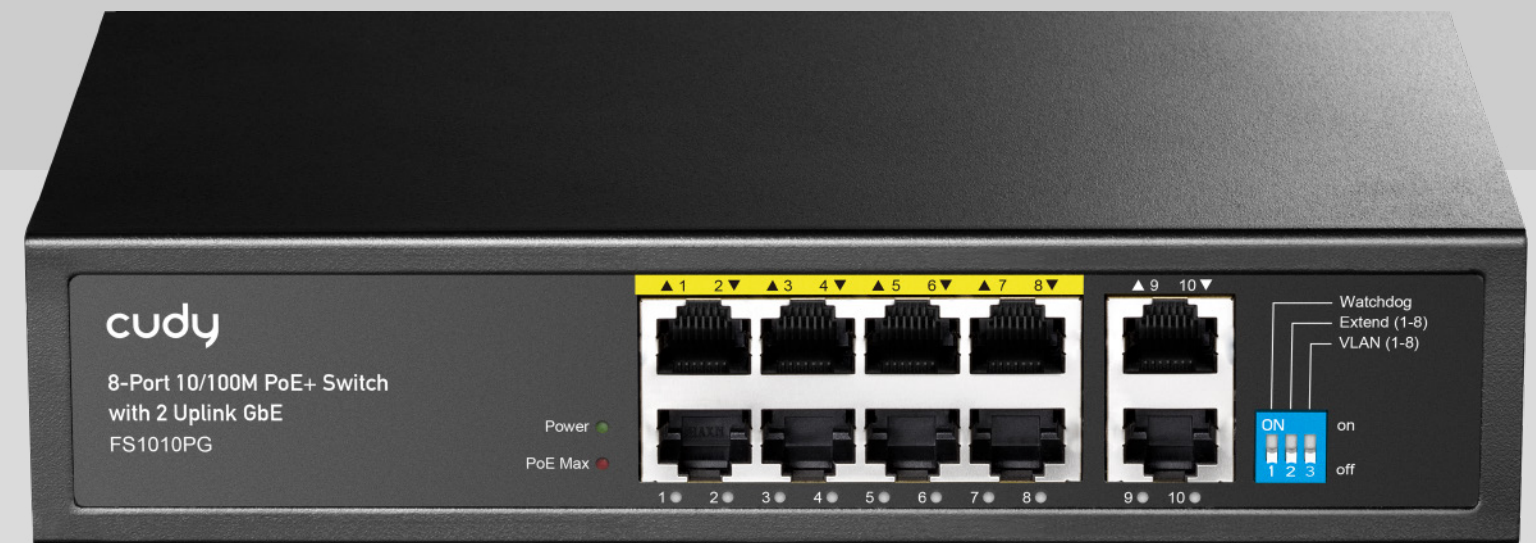
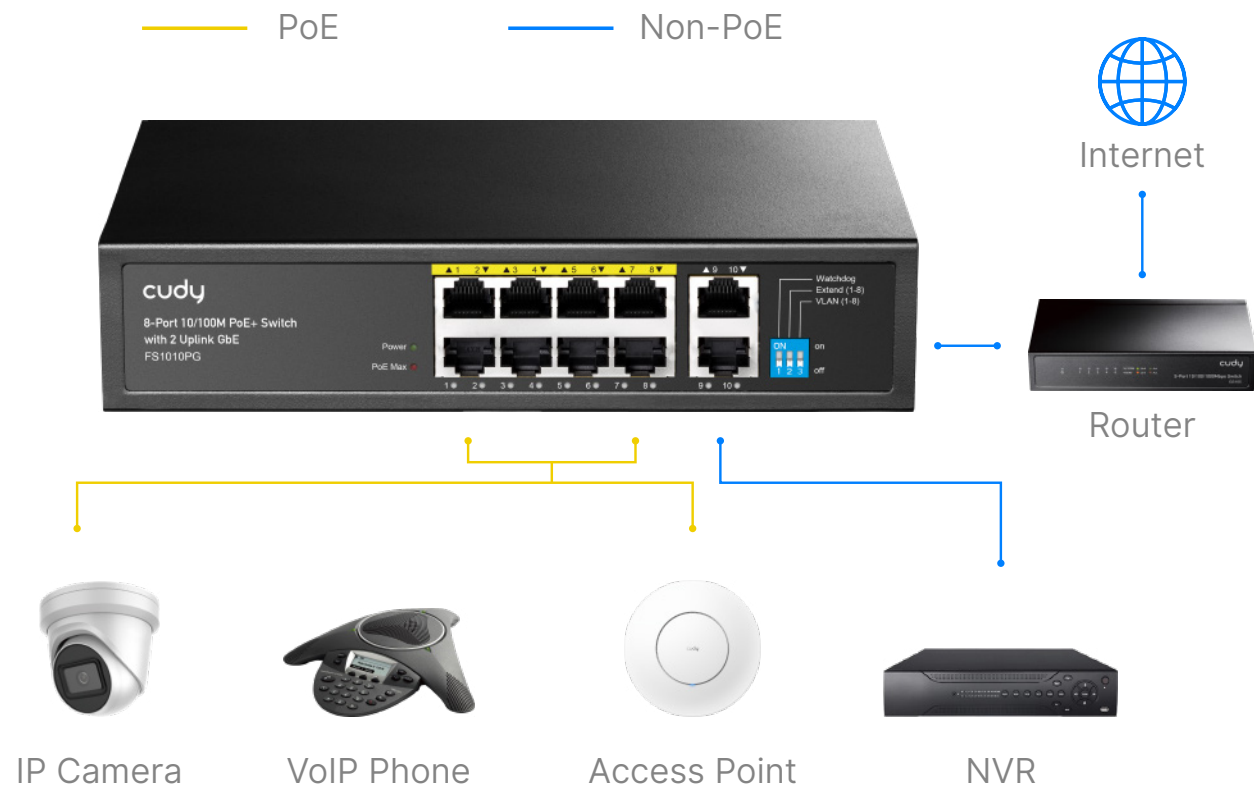


Model: FS1010PG

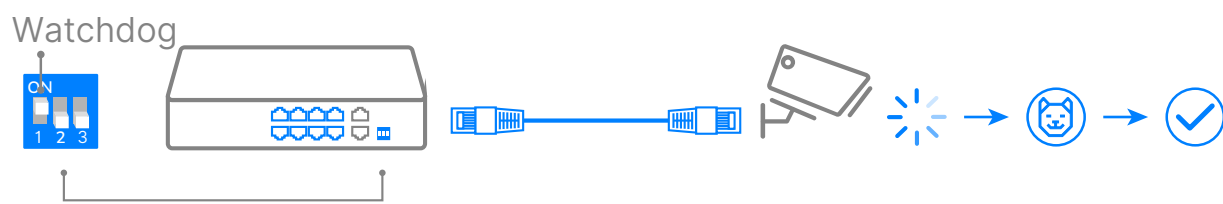
# 8-Port 10/100M PoE+ Switch with 2 Uplink GbE





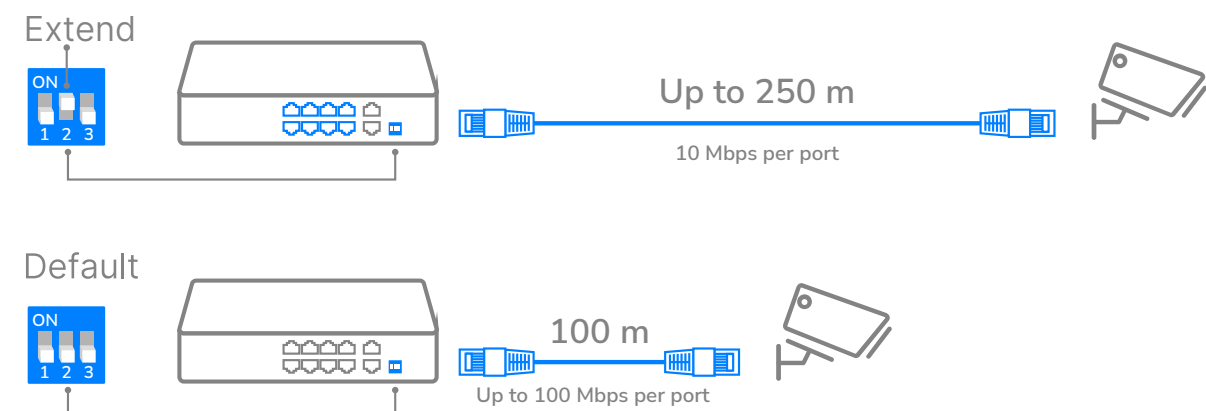
## Watchdog for Improved Reliability

The PoE Watchdog monitors link activity on port 1~8 and attempts to reboot connected clients that have been inactive for 5 minutes, ensuring system stability. Do not turn it on for clients with online auto-upgrade feature.



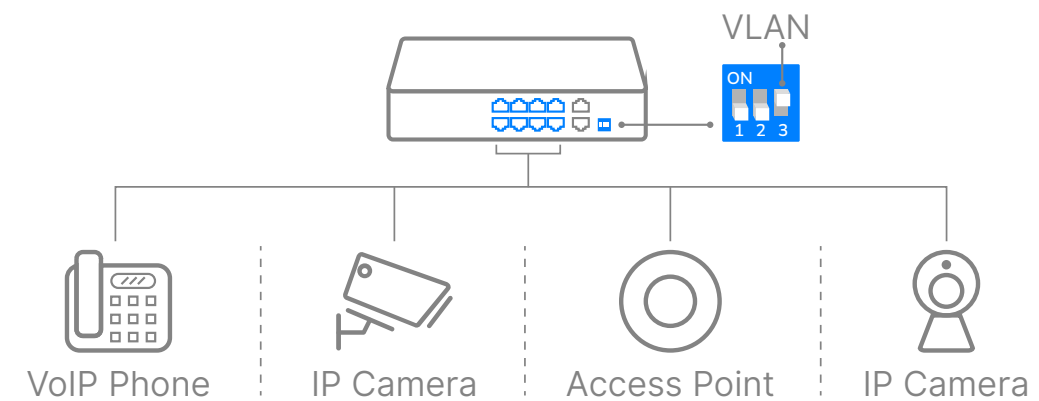
## Extend for Long-Range Powering

Prolongs the PoE transmission distance of ports 1~8 to a maximum of 250 m, enabling long-range surveillance installations.



## VLAN Mode for Port Isolation

Separates clients into different subnets for improved security, preventing data leakage in case of client-side hacking.





## Highlights

A 8-FE PoE switch with 2-GE, a 120W power supply, and a silent cooling system, featuring independant control switch for Extend, VLAN, and Watchdog feature.

- RTL8366SD-CG Chipset
- 8× FE with 802.at/af Mode A PoE
- 2× Uplink GbE
- 120W Power Supply
- Extend On/Off, VLAN On/Off
- Watchdog On/Off
- PoE Max Status LED
- 200×118×44 mm (7.87×4.65×1.73")

## Package Content

- FS1010PG
- Power Cord
- Installation Guide

## Specifications

Interfaces	Gigabit RJ45 Ports	2
	10/100 Mbps RJ45 Ports	8
	10/100 Mbps RJ45 PoE Ports	#1~#8
	Max Power on a Single PoE Port	30W
PoE Port Notes		The PoE ports comply with IEEE 802.3at/af standards.
Intelligent Power Management (PoE)		Automatically disconnect the lastly powered device when power exceeds budget.
Extend Mode Ports		#1~#8
VLAN Mode Ports		#1~#8
LED		Power Link/ACT of Each Ethernet Port PoE Max Status
Power Input		AC Inlet
Physical Buttons		Extend On/Off VLAN On/Off PoE Watchdog On/Off
Physical Buttons Note		The PoE Watchdog will attempt to reboot the plugged-in clients that have been inactive for 5 minutes. Do not turn it on for clients with online auto-upgrade feature.



# Specifications

Performance	Copper Speed and Distance	Cat. 3 or higher cable:
		100 meters at 10 Mbps
		Cat. 5 or higher cable:
		100 meters at 100 Mbps
		Cat. 5e or higher cable:
		100 meters at Gigabit
	Copper Speed and Distance Note	Cat. 5e or higher cable:
		250 meters at 10 Mbps
		Gigabit speed is only available on the uplink ports. 250-meter transmission
		is only available on the Extend Mode ports.
Power	MAC Address Table	2048
	Max Switching Capacity	5.6 Gbps
	Max Forwarding Rate	4.166 Mpps
	Jumbo Frame	2 KB
	Packet Buffer	2 Mbit
	Power Methods	AC
	AC	100-240V 50/60Hz
	Power Supply	120W
	Max Power Excluding PoE	5W

# Specifications

Switching	802.3 Protocols	802.3i 10BASE-T
		802.3u 100BASE-TX
		802.3ab 1000BASE-T
		802.3x Flow Control
		802.3af PoE
		802.3at PoE
Reliability	Grounding Methods	Three-Prong Plug
		IEC/EN 61000-4-2, Level 3 ESD:
		Contact: 6kV; Air: 8kV
		IEC/EN 61000-4-5, Level 4 Surge:
	Environment	Power: DM 2kV, CM 4kV; RJ45: CM 4kV
		Operating Temperature:
		0~40 °C (32~104 °F)
		Storage Temperature:
		-40~70°C (-40~158 °F)
		Operating Humidity:
		10~90% non-condensing
		Storage Humidity:
		10~95% non-condensing



# Specifications

Mechanical	Dimension	200×118×44 mm
		7.87×4.65×1.73 inches
	Casing Material	Metal
	Installation	Desktop
		Rackmount via Brackets (Brackets not included in the box)
Ordering Information	Retail Package Dimension	230×202×78 mm
		9.06×7.95×3.07 inches
	Units per Carton	10
	Carton Dimension	48.2×41×22.1 cm
		18.98×16.14×8.7 inches